

## The National Residency Matching Program Results for 2004: Slight Decline in Recruitment.

Submitted for May 2004 ASA Newsletter

Alan W. Grogono, M.D., F.R.C.A.,  
Department of Anesthesiology, Tulane University, New Orleans, Louisiana

**Introduction:** The twelfth annual report about the anesthesiology results of the National Residency Matching Program (NRMP) shows the first decline in recruitment since 1999. This overall decline was partially offset by an increase in the recruitment of non-US International Medical Graduates. This year fewer programs (only 72%) filled every position that they offered via the Match.

**NRMP Results (Table 1):** This year a total of 1,200 were recruited via the Match (Figure 1), a decline in recruitment of 0.9 percent. This total is still well above the 1992 peak of 1,025. This year's slight decline contrasts with the increases of recent years: 9% last year; 14% in 2002; 21% in 2001, and 22% in 2000. However, the number of graduating US allopathic seniors matching into anesthesiology decreased from 927 to 897, a 3.2% decrease (Figure 2). This is 40 fewer than the 937 recruited in 1990 and 1991, and represents 6.14% of the 14,609 US senior students in the Match (Table 2), appreciably less than the record of 6.7% which occurred in 1991.

During the years 1996 to 2003 the total number matching in all the other categories (non-US allopathic seniors) increased from 156 to 284. This year the number rose to 303, mostly attributable to the increase of twenty in the number of IMG/Non-US graduates (Table 3).

Year	PG1 Positions			CA1 Positions			Sum of PG1 + CA1			Unfilled
	Students	All	Avail	Students	All	Avail	Students	All	Avail	
1990	251	264	321	642	693	822	937	957	1143	186
1991	247	266	329	698	751	963	937	1017	1292	275
1992	244	273	352	682	752	1020	926	1025	1372	347
1993	199	235	325	632	708	1094	832	930	1386	456
1994	163	191	297	542	634	1022	705	825	1295	470
1995	93	136	241	330	400	902	423	536	1143	607
1996	43	113	234	126	211	712	169	324	946	622
1997	80	197	317	173	300	677	253	497	994	497
1998	118	246	347	270	399	661	388	645	1008	363
1999	137	255	376	288	401	671	425	656	1047	391
2000	171	291	349	378	510	656	549	801	1005	204
2001	237	332	371	476	641	733	713	973	1104	131
2002	307	375	392	597	737	777	904	1112	1169	57
2003	321	415	431	606	796	833	927	1211	1264	53
2004	322	414	443	575	786	846	897	1200	1289	89

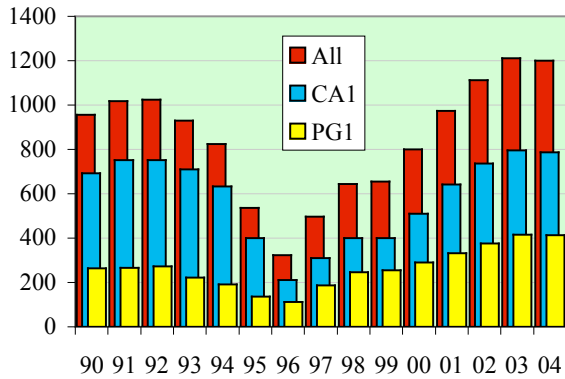
**Table 1: Match Results for Anesthesiology 1990 - 2004.**

"Students" are graduating seniors from US Allopathic Medical Schools.

"All" includes every category listed in Table 3.

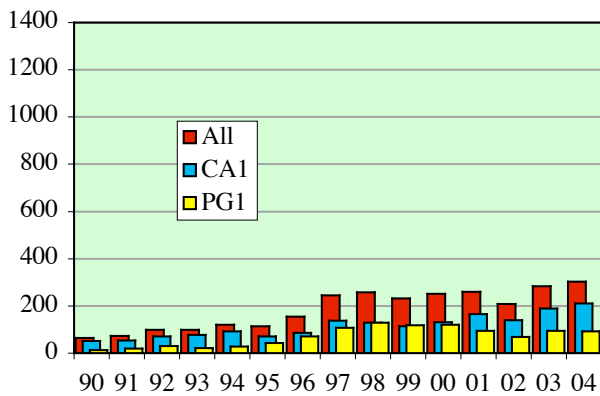
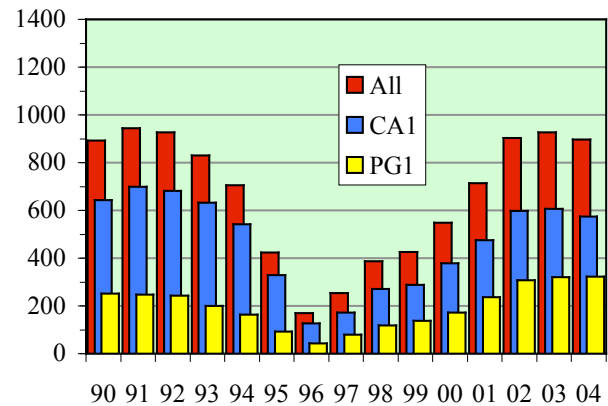
"Avail" represents the number of positions offered via the Match.

"Unfilled" represents the difference between "Available" and "All".



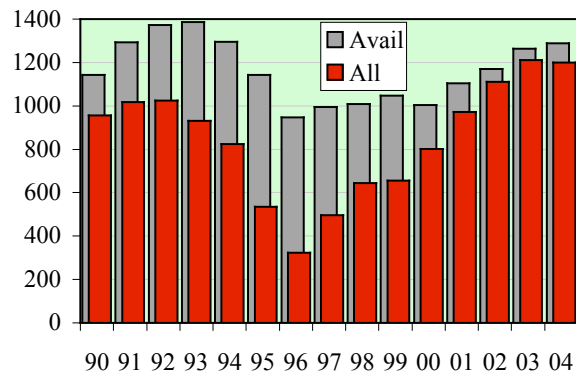
**Figure 1:** Total recruitment into anesthesiology via the NRMP during the years 1990 to 2004. The three columns represent the numbers recruited into the PG1 year, the CA1 year and the total.

**Figure 2:** Graduating US Seniors recruited into anesthesiology during the years 1990 to 2004. The three columns represent the numbers recruited into the PG1 year, the CA1 year and the total.



**Figure 3:** Recruits other than US allopathic seniors matching into anesthesiology during the years 1990 to 2004. The three columns represent the numbers recruited into the PG1 year, the CA1 year and the total.

**Figure 4:** Number of places available (Avail) vs. total number recruited (All) during 1990 to 2004



Year	Students	Total	Percent
1990	937	16286	5.75%
1991	937	13945	6.72%
1992	926	14027	6.60%
1993	832	14098	5.90%
1994	705	14209	4.96%
1995	423	14626	2.89%
1996	169	14543	1.16%
1997	253	14614	1.73%
1998	388	14616	2.65%
1999	425	14606	2.91%
2000	549	14993	3.66%
2001	713	14464	4.93%
2002	904	14336	6.31%
2003	927	14331	6.47%
2004	897	14609	6.14%

**Table 2. The number of US Allopathic Medical Students (Students) matching into anesthesiology compared to the total number in the NRMP Match for each year.**

**Positions Offered and Unfilled:** This year there was only a 2% increase in the total number of positions offered via the Match (8% increase last year and 6% the year before). The total offered, 1289, is 7% below the 1993 peak of 1,386. The number of unfilled positions increased from 53 to 89 (68% increase), the first increase since 1996 (Figure 4).

**Distribution of Recruits (Table 3):** For five years now, second to US allopathic graduates, the osteopathic graduates have made the greatest contribution to the anesthesiology match; this years total of 133 is similar to last years total of 126. Amongst the other non-US allopathic groups (Figure 5) the principal changes are that the number of IMG/Non-US graduates increase by 20 to 73, and the number of IMG/US graduates decreased by 11 to 53.

	1996	1997	1998	1999	2000	2001	2002	2003	2004
US Allopathic	169	253	388	425	549	713	904	927	897
Osteopathic	14	7	17	35	55	107	89	126	133
IMG/US	10	22	34	41	59	50	51	64	53
IMG/Non-US	130	213	201	152	133	79	47	53	73
Sponsored Grad	1	2	2	2	3	15	15	36	40
Fifth Pathway	0	0	0	1	2	4	3	4	0
Canadian	1	0	2	0	0	3	3	1	4
US Physician	0	0	1	0	0	2	0	0	0
Total	325	497	645	656	801	973	1112	1211	1200
Non-US Allopathic	156	244	257	231	252	260	208	284	303

**Table 3: Distribution via the Match 1996 to 2004.**

This table shows the distribution into anesthesiology residencies from various sources during the last nine years. This year, the most significant changes were a reduction in the number of US allopathic students and an increase in the number of IMG non-US graduates entering anesthesiology.

2000			2001			2002			2003			2004		
State	M	Av	State	M	Av	State	M	Av	State	M	Av	State	M	Av
CA	95	100	CA	106	109	NY	136	151	NY	177	182	NY	162	186
NY	69	94	NY	93	126	CA	114	115	CA	122	122	CA	118	119
TX	65	78	TX	70	80	TX	77	79	MA	80	86	MA	89	96
MA	64	76	MA	68	74	PA	76	81	TX	80	83	TX	81	83
PA	41	58	PA	65	74	MA	65	67	IL	68	68	IL	73	74
IL	39	65	IL	48	63	IL	58	58	PA	67	68	PA	68	76
NC	33	33	FL	36	38	OH	43	50	OH	52	54	OH	51	55
FL	31	31	NC	35	35	FL	42	42	FL	50	52	FL	47	49
MI	30	30	MD	32	32	NC	38	38	NC	39	39	NC	40	41
MO	26	33	MI	29	29	MD	32	32	MD	36	36	MI	36	36
MD	25	29	WI	29	29	MO	32	32	MI	34	36	MD	32	32
WI	19	19	OH	28	40	WI	28	28	WI	30	30	MO	26	35
LA	18	18	MO	26	33	MI	27	33	MO	24	33	WI	26	26
WA	18	19	GA	20	22	CT	24	24	MN	23	23	CT	25	25
OH	17	39	MN	20	20	GA	22	22	WA	23	23	IN	23	23
IN	16	20	TN	20	22	WA	21	21	CT	22	27	MN	23	23
KY	15	16	VA	19	19	IN	20	20	GA	22	22	VA	22	22
MN	15	18	IN	18	20	MN	20	21	IN	20	20	GA	21	25
AL	14	14	CT	17	24	KY	19	20	TN	18	23	TN	19	20
VA	14	20	LA	17	18	TN	19	21	KY	17	19	AL	16	16
TN	13	22	WA	17	19	VA	19	23	AL	16	16	LA	16	18
CO	12	12	KY	15	17	LA	18	18	LA	16	18	WA	16	24
IA	12	12	AL	14	14	AL	15	15	VA	16	23	AR	14	14
GA	11	17	DC	12	13	DC	15	15	AR	14	14	KY	14	16
NE	9	10	IA	12	12	CO	12	12	DC	14	15	IA	13	13
AZ	8	8	KS	11	12	KS	12	12	NJ	13	14	KS	13	13
SC	7	9	CO	10	10	AR	11	11	CO	12	12	NJ	13	18
AR	6	6	UT	10	10	IA	11	11	IA	12	12	CO	12	12
CT	6	13	AR	8	8	UT	10	10	KS	11	11	UT	10	10
KS	6	9	NE	8	8	AZ	9	9	UT	10	10	AZ	9	9
NM	6	6	SC	8	9	NE	8	8	AZ	9	9	NE	8	8
UT	6	6	AZ	7	7	MS	7	7	NE	8	8	DC	7	12
MS	5	7	MS	6	7	SC	7	7	MS	7	7	MS	7	7
NH	5	5	NM	6	6	NJ	6	12	PR	7	7	NH	7	7
OK	5	6	OR	6	6	NM	6	6	SC	7	7	NM	7	7
DC	4	13	NH	5	5	OK	6	6	NM	6	6	OR	7	7
PR	4	4	NJ	5	13	OR	6	6	OK	6	6	SC	7	7
ME	3	4	ME	4	4	PR	5	7	OR	6	6	OK	6	6
OR	3	6	OK	4	4	WV	5	5	NH	5	5	PR	6	6
WV	3	5	PR	4	4	ME	4	4	ME	4	4	VT	4	4
VT	2	4	VT	3	4	VT	4	4	VT	4	4	ME	3	4
NJ	1	11	WV	2	5	NH	3	6	WV	4	4	WV	3	5

N=42 801 1005

N=42 973 1104

N=42 1112 1169

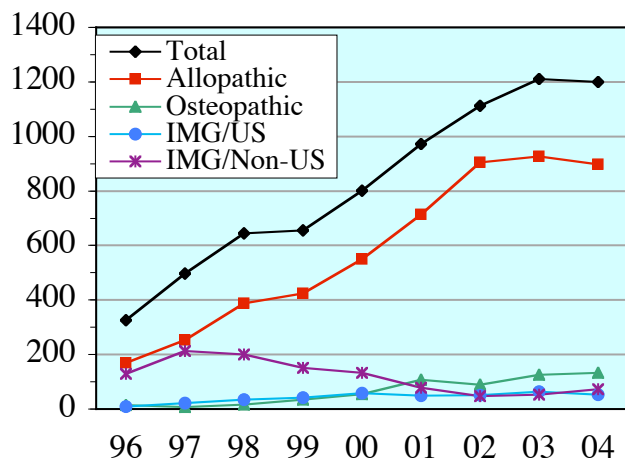
N=42 1211 1264

N=42 1200 1289

**Table 4: Positions available & matched by State for 2000 to 2004.**

For each year the data is ranked by the number matched. This year, of the total matching into anesthesiology, 23% went to the top 2 States, 44% to the top 5, and 64% to the top 10.

**Key:** M = Total positions Matched  
 Av = Total positions Available



**Figure 5.** Graph of the distribution of people recruited via the Match 1996 to 2004.

This graph is based on the larger categories in Table 2. There is a slight decline in recruitment from US allopathic medical schools and slight increase in IMG/Non-US.

**Regional Distribution (Table 4):** The NRMP data for the last five years has again been compiled by state and ranked by the number recruited into each state's residencies via the Match. For five years now, New York and California have occupied the two top positions recruiting this year 162 (15 fewer) and 118 (4 fewer) respectively. These two states recruited 23% of the total this year, down from 25% last year. Of the next three states Massachusetts recruited 89 (an increase of 9), Texas 81 (an increase of 1), and Illinois 73 (an increase of 5). Between them, the top five states recruited 523 (44 percent), and the top ten recruited 765 (64 percent).

In most of the other states there was little or no change in the number recruited this year. In DC, however, the number recruited fell by 7 (50% reduction) and in Washington State the number also fell by 7 (30% reduction). This year only 55% of the states filled every position that was offered in anesthesiology via the NRMP, compared to 64% last year.

**Comment:** Last year, recruitment to anesthesiology via the NRMP already appeared to be leveling off. This year, there has actually been a slight reduction, primarily associated with the recruitment of fewer allopathic US seniors. This year's decline was partially offset by matching 20 more IMG/Non-US graduates. Despite this, 89 positions remained unfilled this year (an increase of 36). Some of these unfilled vacancies can be explained by the growth in the number of positions available from 1264 to 1289.

In the last year or two, recruitment via the NRMP has produced the majority of the recruits into anesthesiology. If recent trends continue, for every four people recruited via the Match, an additional one will be recruited by the time the statistics are compiled about the composition of the critical CA1 year. Although this NRMP data indicates that recruitment appears to be slightly weaker this year, the final number recruited will probably be unaffected. The decline serves, nevertheless, to remind us that there is no cause for complacency. We must maintain our efforts to ensure that we attract excellent US allopathic students into anesthesiology.

**Website:** This article, previous articles, and additional information about the numbers of students recruited into anesthesiology from each school and the numbers recruited into, and graduating from, each residency program are available at <[www.grogono.com/nrmp](http://www.grogono.com/nrmp)>.

**Acknowledgments:** This article was prepared primarily for publication in the *ASA NEWSLETTER* and I thank the editor, Douglas R. Bacon, M.D., for his agreeing that it may be simultaneously made available on the website. I thank Mona Signer of the NRMP whose prompt response permits the rapid production of this article.

*Dr. Grogono's past NRMP articles have appeared in August 1993, May 1994, June 1995, May 1996, May 1997, May 1998, May 1999, May 2000, May 2001, May 2002 and May 2003.*